

RNAV (GPS) RWY 13

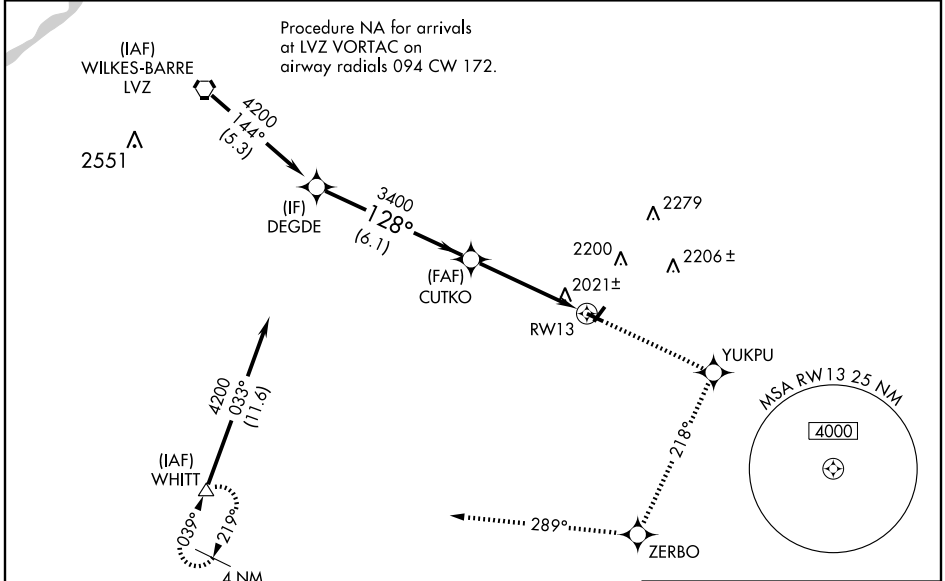
MOUNT POCONO/ POCONO MOUNTAINS MUNI (MPO)

WAAS CH 48911 W13A	APP CRS 128°	Rwy Idg TDZE Apt Elev	3947 1885 1915
--	------------------------	-----------------------------	---

DME/DME RNP-0.3 NA. Visibility reduction by helicopters NA. When local altimeter setting not received, use Wilkes-Barre/Scranton altimeter setting and increase all DA 179 feet and all MDA 180 feet. Increase visibility LPV all Cats ½ mile, LNAV/VNAV all Cats ¾ mile, LNAV Cats C and D ½ mile, Circling Cat B ½ mile, Cat C ¾ mile, and Cat D ½ mile. For uncompensated Baro-VNAV systems, LNAV/VNAV NA below -18°C (0°F) or above 45°C (113°F). Baro-VNAV NA when using Wilkes-Barre/Scranton altimeter setting.

MISSED APPROACH:
Climb to 4200 direct YUKPU and via 218° track to ZERBO and via 289° track to WHITT and hold.

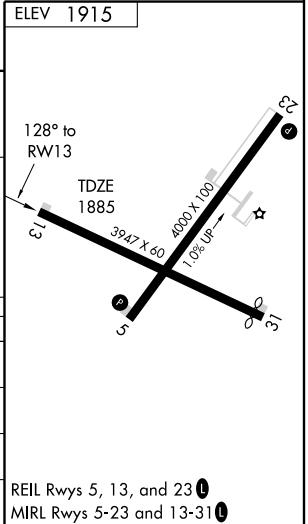
ASOS 120.275	WILKES-BARRE APP CON 126.3 256.7	CLNC DEL 125.3	UNICOM 122.7 (CTAF) 0
------------------------	--	--------------------------	---------------------------------



NE-4, 02 JUL 2009 to 30 JUL 2009

NE-4, 02 JUL 2009 to 30 JUL 2009

Procedure Turn NA	DEGDE	4200	YUKPU	ZERBO	WHITT
		↑	218° TRK	289° TRK	△
GS 3.00° TCH 40	4200	128°	CUTKO	3400	RWY 13
		6.1 NM	4.6 NM		
CATEGORY	A	B	C	D	
LPV DA		2278-1½	393 (400-1½)		
LNAV/VNAV DA		2315-1½	430 (400-1½)		
LNAV MDA	2400-1	515 (500-1)	2400-1½ 515 (500-1½)	2400-1¾ 515 (500-1¾)	
CIRCLING	2480-1 565 (600-1)	2500-1 585 (600-1)	2500-1½ 585 (600-1½)	2540-2 625 (700-2)	



REIL Rwy 5, 13, and 23 0
MRL Rwy 5-23 and 13-31 0